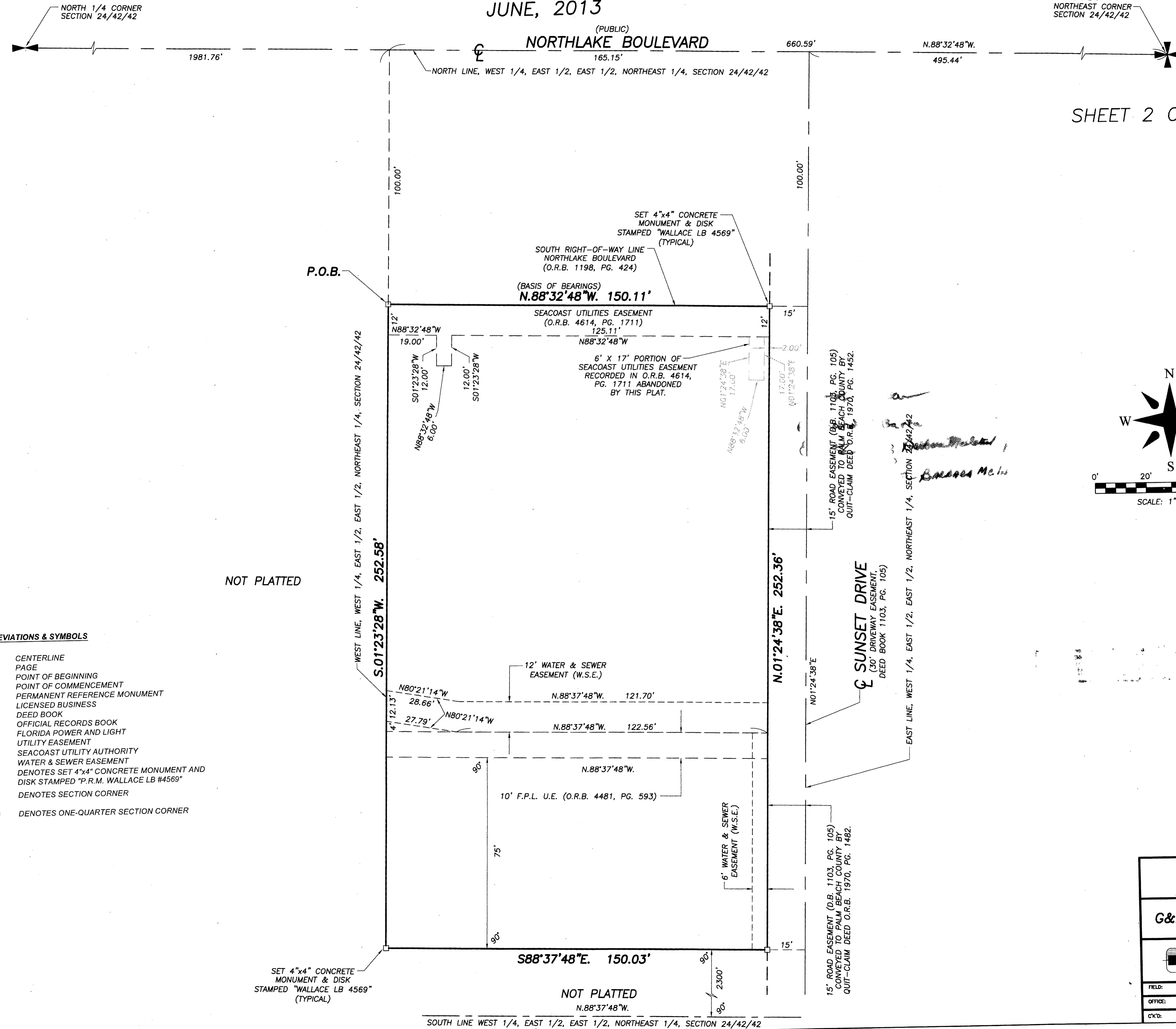


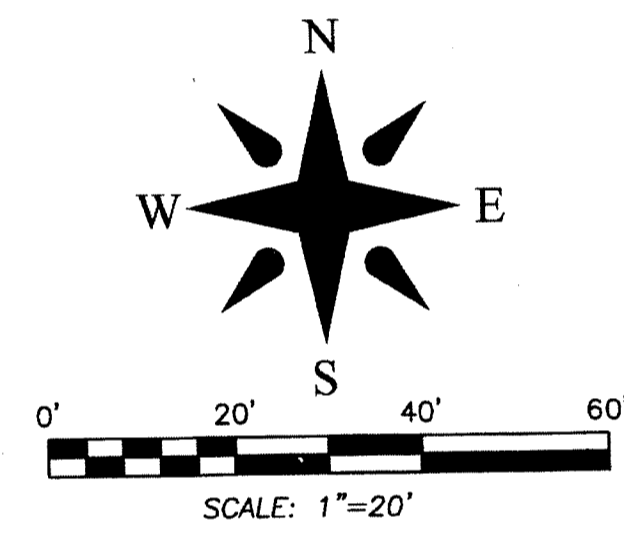
GORDON & DONER LAW CENTER

2

LYING IN SECTION 24, TOWNSHIP 42 SOUTH, RANGE 42 EAST
CITY OF PALM BEACH GARDENS, PALM BEACH COUNTY, FLORIDA
JUNE, 2013



SHEET 2 OF 2



NOT PLATTED

- ABBREVIATIONS & SYMBOLS**
- ⊙ C/L = CENTERLINE
 - PG. = PAGE
 - P.O.B. = POINT OF BEGINNING
 - P.O.C. = POINT OF COMMENCEMENT
 - P.R.M. = PERMANENT REFERENCE MONUMENT
 - LB = LICENSED BUSINESS
 - D.B. = DEED BOOK
 - O.R.B. = OFFICIAL RECORDS BOOK
 - F.P.L. = FLORIDA POWER AND LIGHT
 - U.E. = UTILITY EASEMENT
 - S.U.A. = SEACOAST UTILITY AUTHORITY
 - W.S.E. = WATER & SEWER EASEMENT
 - ⊕ = DENOTES SET 4"x4" CONCRETE MONUMENT AND DISK STAMPED "P.R.M. WALLACE LB #4569"
 - ⊕ = DENOTES SECTION CORNER
 - ⊕ = DENOTES ONE-QUARTER SECTION CORNER

BOUNDARY PLAT FOR:		
G&D REAL ESTATE HOLDINGS, LLC		
WALLACE SURVEYING <small>CORP. LICENSED BUSINESS # 4569 5553 VILLAGE BOULEVARD, WEST PALM BEACH, FLORIDA 33407 * (561) 640-4551</small>		
FIELD: B.M.	JOB NO.: 02-1096.4	F.B. WP117 PG. 18
OFFICE: R.C.	DATE: 2/18/11	DWG. NO.: 02-1096-1
CHKD: R.C.	REF: 02-1096-1.DWG	SHEET 2 OF 2